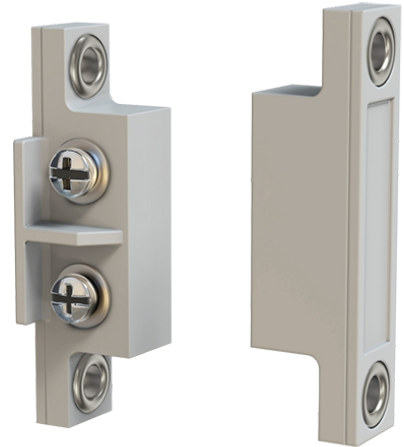


SSG11 Series

Contactless Magnetic Switch

Product introduction

The proximity switch with 15mm response distance to start the magnetic spring to switch contacts with a permanent magnetic is suitable for detecting door close/open. With advantage easy to install and sensitive detection.



Product parameter

Model	SSG11
Detection head size	50mmx14mmx14mm
Type	Magnetic reed switch/ proximity conduction
Detection distance	15mm
Contacts capacity (AC voltage is prohibited)	Max. voltage: DC100v; Max. current DC0.1A, Max. contact capacity: 10W
Response frequency	<20Hz
Working temperature	-20~+60°C
Storage temperature	-20~+60°C
Working humidity	35~85%RH
Storage humidity	35~85%RH
Contact withstand voltage	DC250V 1min (leakage 1mA)
Vibration resistance	Duranc: 10-55Hz double amplitude 1.5mm 2h each in X, Y and Z direction
Compact resistance	Duranc: 300m/s. 3 times each in X,Y and Z direction
Protection level	IEC:IP40
Connection method	Terminal type
Material	ABS

Product size

